

Basic Information

Product Name	Anti-CDK6 Antibody
Gene Name	CDK6
Source	Rabbit
Clonality	Polyclonal
Isotype	IgG
Species Reactivity	human, mouse
Tested Application	WB, IHC, ELISA
Contents	500 ug/ml antibody with PBS, 0.02% NaN ₃ , 1 mg/ml BSA and 50% glycerol.
Immunogen	E. coli-derived human Cdk6 recombinant protein (Position: M1-A326). Human Cdk6 shares 96.3% and 96.6% amino acid (aa) sequence identity with mouse and rat Cdk6, respectively.
Concentration	500 ug/ml
Purification	Immunogen affinity purified.
Observed MW	37 kDa
Dilution Ratios	Western blot (WB): 1:500-2000 Immunohistochemistry (IHC): 1:50-400 ELISA: 1:100-1000 (Boiling the paraffin sections in 10mM citrate buffer, pH6.0, or PH8.0 EDTA repair liquid for 20 mins is required for the staining of formalin/paraffin sections.) Optimal working dilutions must be determined by end user.

Storage

12 months from date of receipt, -20°C as supplied.

Background Information

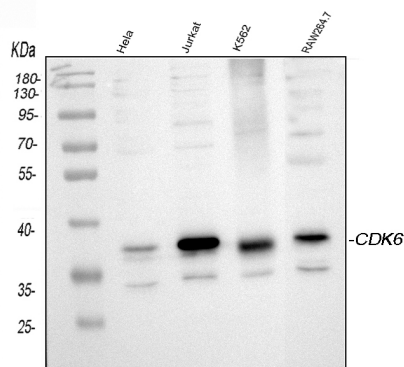
Cell division protein kinase 6, also called Plstire, is an enzyme that in humans is encoded by the CDK6 gene. The protein encoded by this gene is a member of the cyclin-dependent protein kinase (CDK) family. Radiation hybrid analysis and inclusion within a mapped clone place the CDK6 gene at 7q21. Serine/threonine-protein kinase involved in the control of the cell cycle and differentiation and promotes G1/S transition. This gene also involved in initiation and maintenance of cell cycle exit during cell differentiation. It prevents cell proliferation and regulates negatively cell differentiation, but is

required for the proliferation of specific cell types. In addition, CDK6 plays a role in promoting the proliferation of beta-cells in pancreatic islets of Langerhans.

Reference

Anti-CDK6 Antibody 被引用在2文献中。

Selected Validation Data



Western blot analysis of CDK6 using anti-CDK6 antibody (A00358). The sample well of each lane was loaded with 30 ug of sample under reducing conditions.

Lane 1: HeLa whole cell lysates,

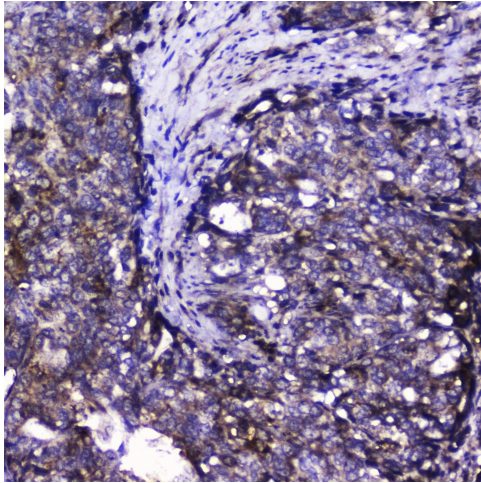
Lane 2: Jurkat whole cell lysates,

Lane 3: K562 whole cell lysates,

Lane 4: RAW264.7 whole cell lysates.

After electrophoresis, proteins were transferred to a membrane.

Then the membrane was incubated with rabbit anti-CDK6 antigen affinity purified polyclonal antibody (A00358) at a dilution of 1:1000 and probed with a goat anti-rabbit IgG-HRP secondary antibody (Catalog # BA1054). The signal is developed using ECL Plus Western Blotting Substrate (Catalog # AR1197). A specific band was detected for CDK6 at approximately 37 kDa. The expected band size for CDK6 is at 37 kDa.



IHC analysis of CDK6 using anti-CDK6 antibody (A00358).

CDK6 was detected in a paraffin-embedded section of human intestinal cancer tissue. Biotinylated goat anti-rabbit IgG was used as secondary antibody. The tissue section was incubated with rabbit anti-CDK6 Antibody (A00358) at a dilution of 1:200 and developed using Streptavidin-Biotin-Complex (SABC) (Catalog # SA1022) with DAB (Catalog # AR1027) as the chromogen.