

Basic Information

Product Name	Anti-IL-1 beta/IL1B Antibody
Gene Name	Il1b
Source	Rabbit
Clonality	Polyclonal
Isotype	IgG
Species Reactivity	mouse
Tested Application	WB, ELISA
Contents	500 ug/ml antibody with PBS, 0.02% NaN ₃ , 1 mg/ml BSA and 50% glycerol.
Immunogen	E.coli-derived mouse IL-1 beta/Il1b recombinant protein (Position: V118-S269).
Concentration	500 ug/ml
Purification	Immunogen affinity purified.
Observed MW	31-35 kDa
Dilution Ratios	Western blot (WB):1:500-2000 ELISA: 1:100-1000

Storage

12 months from date of receipt, -20°C as supplied.

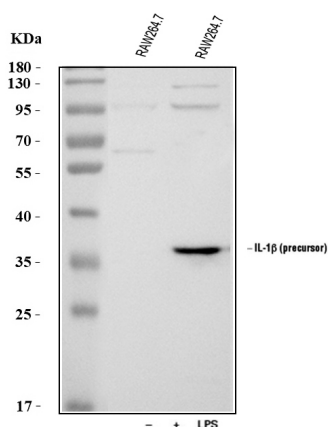
Background Information

Interleukin-1 β (IL-1 β) is a potent stimulator of bone resorption whose gene is mapped to 2q14, and has been implicated in the pathogenesis of high bone turnover and osteoporosis. IL-1 β , a prominent microglia-derived cytokine, caused oligodendrocyte death in coculture with astrocytes and microglia, but not in pure culture of oligodendrocytes alone. It also can cause nuclear export of a specific NCOR corepressor complex, resulting in derepression of a specific subset of nuclear factor-kappa-B (NF κ B)-regulated genes. Furthermore, Microenvironmental IL-1 β and, to a lesser extent, IL-1 α are required for in vivo angiogenesis and invasiveness of different tumor cells. Additionally, the cooperation of IL-1 β and PDGFB induces contractile-to-synthetic phenotype modulation of human aortic smooth muscle cells in culture. Moreover, the association with disease may be explained by the biologic properties of IL-1 β , which is an important proinflammatory cytokine and a powerful inhibitor of gastric acid secretion.

Reference

Anti-IL-1 beta/IL1B Antibody被引用在11文献中。

Selected Validation Data



Western blot analysis of IL-1 beta/IL1B using anti-IL-1 beta/IL1B antibody (A00101-1). The sample well of each lane was loaded with 30 ug of sample under reducing conditions.

Lane 1: mouse RAW264.7(-LPS) whole cell lysates,

Lane 2: mouse RAW264.7(+LPS) whole cell lysates.

After electrophoresis, proteins were transferred to a membrane.

Then the membrane was incubated with rabbit anti-IL-1 beta/IL1B antigen affinity purified polyclonal antibody (A00101-1) at a dilution of 1:1000 and probed with a goat anti-rabbit IgG-HRP secondary antibody (Catalog # BA1054). The signal is developed using ECL Plus Western Blotting Substrate (Catalog # AR1197). A specific band was detected for IL-1 beta/IL1B at approximately 31-35 kDa. The expected band size for IL-1 beta/IL1B is at 31 kDa.